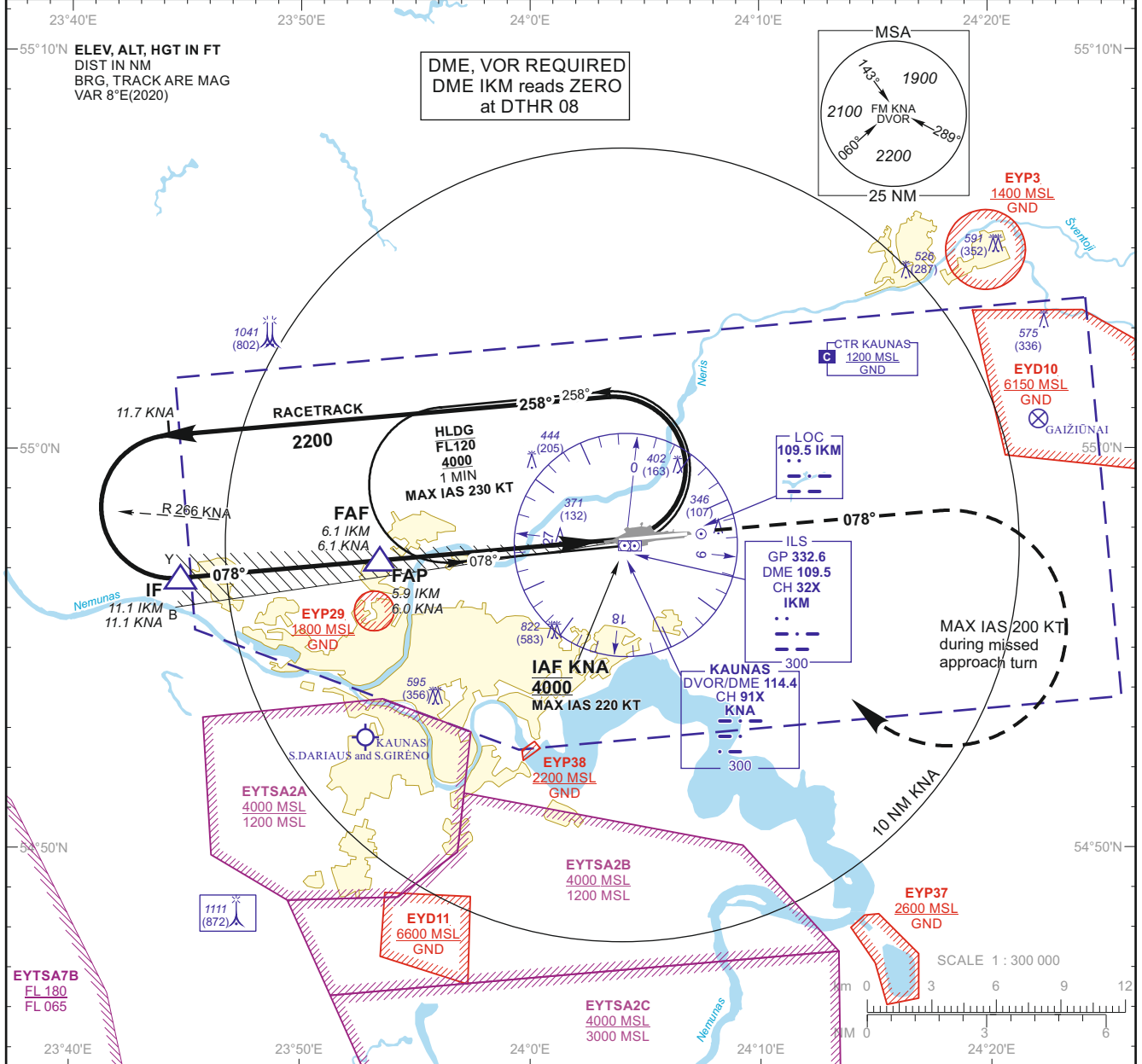
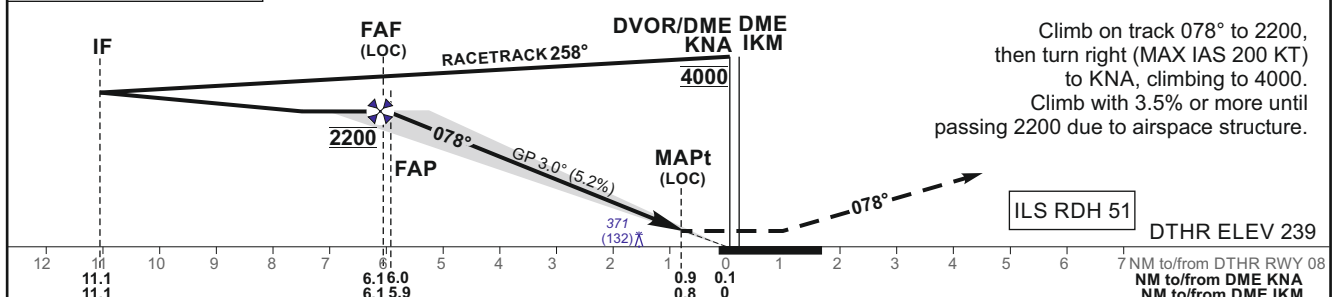


INSTRUMENT
APPROACH
CHART - ICAOAERODROME ELEV 259
HEIGHTS RELATED TO
DTHR RWY 08 - ELEV 239TWR 124.205
118.505
ATIS 129.055KAUNAS
ILS Y or LOC RWY 08
(CAT A/B/C/D)

TRANSITION ALT 5000

MISSED APPROACH



Climb on track 078° to 2200,
then turn right (MAX IAS 200 KT)
to KNA, (MAX IAS to 4000).
Climb with 3.5% or more until
passing 2200 due to airspace structure.

OCA(OCH)		A	B	C	D	DIST DME IKM								5	4	3	2
STRAIGHT-IN APPROACH	ILS CAT I	492 (253)	504 (265)	512 (273)	523 (284)	Altitude				1870		1560		1240		930	
	LOC	630 (390)				Height				(1631)		(1321)		(1001)		(691)	
CIRCLING		710 (450)	760 (500)	1230 (970)	not authorized	LOC : timing not authorized for defining the MAPt											
						GS		Kts	80	100	120	140	160	180			
						FAF - MAPt 5.3 NM		min:sec	3:59	3:11	2:39	2:16	1:59	1:46			
						Rate of descent (5.2%)		ft/min	415	520	625	730	835	940			
						For data tabulation see verso											

Changes: EYP37 and EYP38 added.

24 FEB 2022

©2019 ORO NAVIGACIJA

AIRAC AMDT 001/2022

INSTRUMENT
APPROACH
CHART - ICAO

AERODROME ELEV 259
HEIGHTS RELATED TO
DTHR RWY 08 - ELEV 239

TWR	124.205
	118.505
ATIS	129.055

KAUNAS
ILS Y or LOC RWY 08
(CAT A/B/C/D)

TABULAR DESCRIPTION

ILS or LOC INSTRUMENT APPROACH from IAF(KNA)

FIX/POINTS	COORDINATES	FIX FORMATION
KNA (IAF)	54 57 37.4N 024 03 59.1E	
IF	54 56 48.0N 023 44 45.0E	11.12 NM KNA ; BRG 077.57° / 11.06 NM IKM
FAF	54 57 14.8N 023 53 23.4E	6.12 NM KNA ; BRG 077.57° / 6.05 NM IKM
FAP	54 57 15.6N 023 53 38.8E	5.97 NM KNA ; BRG 077.57° / 5.90 NM IKM
MAPt	54 57 42.3N 024 02 28.0E	0.88 NM KNA ; BRG 077.57° / 0.80 NM IKM
DTHR RWY 08	54 57 46.44N 024 03 50.94E	
DME IKM	54 57 42.8N 024 04 08.4E	
LOC IKM	54 57 55.25N 024 06 49.06E	
Final approach (LOC) descent angle: 3.00°		

Changes: new chart.